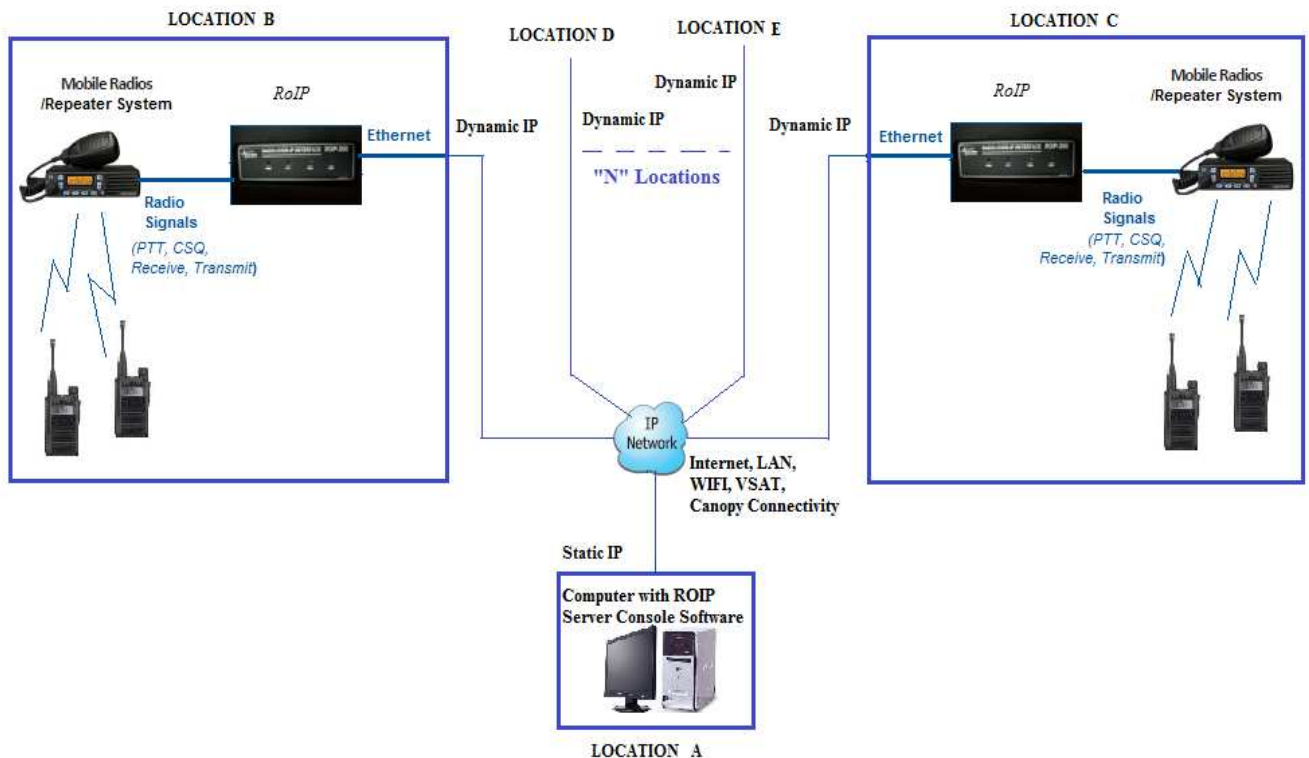


ROIP Server Console Software

Features and Specifications

MULTI POINT CONFIGURATION

For connecting more than two radio wireless networks with each other, you can use Multi Point Configuration. In this configuration you need ROIP at each location connected with the base station and having Internet Connectivity. Also an additional Computer will be required at any one location having Internet (with Static IP Address, ROIP don't require Static IP Address in this configuration). A customized ROIP Server Console Software will be required and will be installed on the Computer. All the ROIPs will be connected to this Computer. Whenever any handset transmits, Server Console will receive that audio and will transmit to all the other ROIPs as per the configuration done in the Server Console. Thus you can connect all the locations or only few locations at a time together over the IP. The schematic diagram of Multi Point Configuration is shown below:



Radio Over IP Gateway Multi Point Configuration

RADIO OVER IP GATEWAY SERVER CONSOLE
Version 1.40.08
Copyright © 2014 Pulse Communication Systems Pvt. Ltd.

File Setting Recording Help

PTT
Select/Clear BroadCast Ptt

USER ACTIVITY
[6:47 PM]
===== ROIP Multi Connect Software Started =====

1	USER1		None	
2	USER2		None	
3	USER3		None	
4	USER4		None	
5	USER5		None	
6	USER6		None	
7	USER7		None	
8	USER8		None	
9	USER9		None	
10	USER10		None	
11	USER11		None	
12	USER12		None	
13	USER13		None	
14	USER14		None	
15	USER15		None	
16	USER16		None	
17	USER17		None	
18	USER18		None	
19	USER19		None	
20	USER20		None	
21	USER21		None	
22	USER22		None	
23	USER23		None	
24	USER24		None	
32	USER32		None	
33	USER33		None	
34	USER34		None	
35	USER35		None	
36	USER36		None	
37	USER37		None	
38	USER38		None	
39	USER39		None	
40	USER40		None	

USER1
IP:0.0.0.0
Port:4040
ID:0
Channel 0
PTT
Unlock

USER2
IP:0.0.0.0
Port:4041
ID:1
Channel 0
PTT
Unlock

Group0
Select Group
Shared Audio

Group1
Select Group
Shared Audio

Group2
Select Group
Shared Audio

Group3
Select Group
Shared Audio

Group4
Select Group
Shared Audio

Group5
Select Group
Shared Audio

Group6
Select Group
Shared Audio

Group7
Select Group
Shared Audio

Group 9
Select Group
Shared Audio

Group 10
Select Group
Shared Audio

Group 11
Select Group
Shared Audio

Group 12
Select Group
Shared Audio

Group 13
Select Group
Shared Audio

Group 14
Select Group
Shared Audio

Group 15
Select Group
Shared Audio

Group 16
Select Group
Shared Audio

Active Recording

April 02, 2014 18:47:37

Software Features

- Multi ROIP (users) Connectivity.
- Different User Grouping Facility.
- Live Monitoring of user communication at console.
- Live Status Indication of all users.
- Individual/ group/ broadcast communication with users from console.
- Online Call forwarding to other user by Operator
- Console Configurable User Call Group.
- RSSI Level Indicator
- Remote Channel Changing
- Event Logging.

Specifications

Network Requirements

- Device Payload: *1kbps idle, 64kbps active per user*
- Network Loading: *Minimum 128kbps Network Bandwidth per user*
- Packet Loss: *<1%*
- Packet Delay: *<400ms*
- Network Type: *Fully switched Ethernet, full duplex.*

Other Features

- Wide Area Network Connectivity.
- Auto-Connection on link or power reset.
- User Programmable IP Configuration.
- Flexible Port Address Configurability.
- Secured Communication by using Authentication Packets.
- Connection between Static IP Network and a Static/Dynamic IP Network.
- Audio Communication Recording (*Optional*)

**TECHNICAL SPECIFICATIONS ARE SUBJECT TO
CHANGE WITHOUT OBLIGATION OR NOTICE**



PULSE COMMUNICATION SYSTEMS PVT. LTD.

F-90/22 OKHLA PHASE 1, NEW DELHI-110020

Mob: +91 9717284220, Tel: +91 11 26817139, Fax: +91 11 26817138

Email: info@pulsecom.co.in Website: www.pulsecom.co.in SkypeId: *deepmadan*